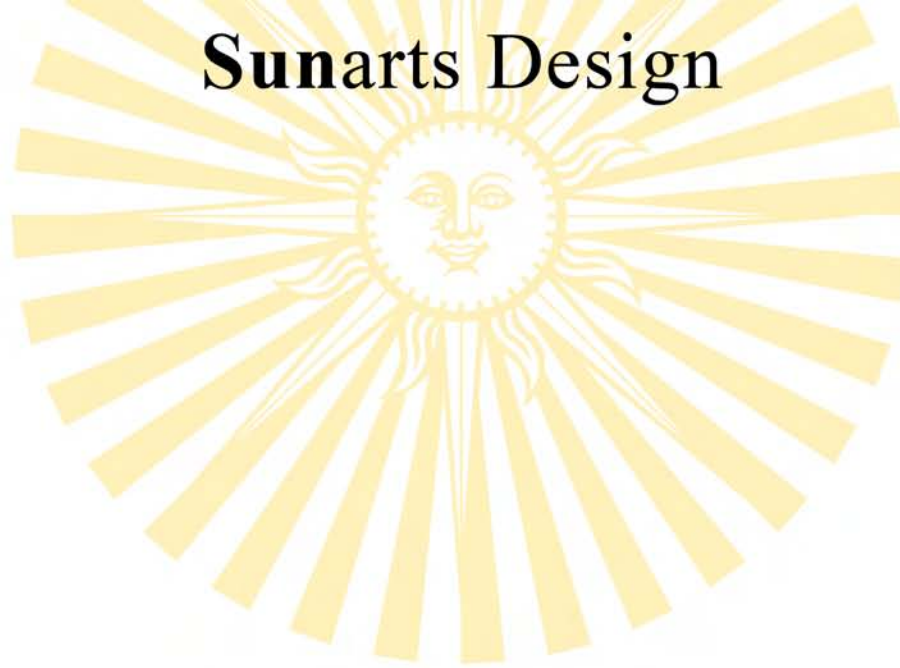


Sunarts Design



Sunarts Design is dedicated to the creation and management of environments that are ecologically sustainable. In our design process we directly involve the future users of the landscape where possible. This approach is based on an appreciation that those who inhabit the land have a perception and understanding of the environment equal in importance to the technical skills of the designer. We specialize in design and project management.

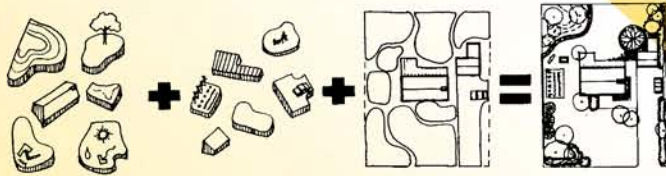
www.sunarts.ca

LANDSCAPE

ARCHITECTURE is the profession concerned with the planning, design and management of the natural and built environments.

The only limit to your garden is at the boundaries of your imagination

Thomas D. Church



From Conception to Project Management



Commercial Landscapes



The Sterling Hall Ecotone Garden was designed to support plant species from each of Toronto's three plant zones; the Boreal Forest, the Eastern Deciduous Forest, and the Prairie /Savannah Woodlands.



Residential Landscape Design
Lot Grading Plans
Planting Design
Barrier-free Design
Commercial Landscapes
Maintenance Plans

ECOLOGICAL

RESTORATION

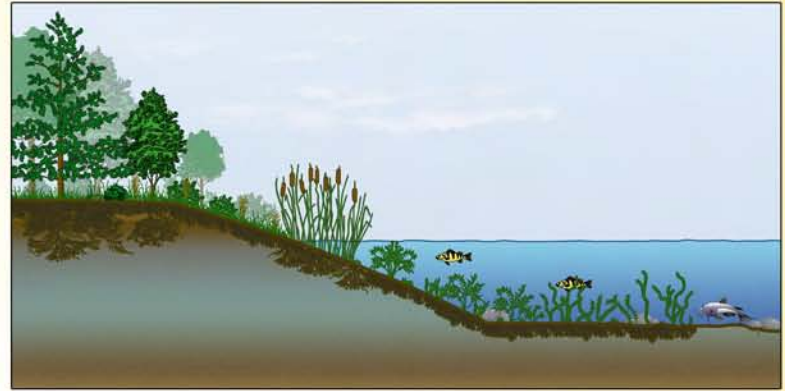
is the process of assisting the recovery of a degraded ecosystem through carefully planned human intervention.

"All life depends on plants".

— motto of Kew Gardens, London, England.

We must build landscapes that heal, connect, and empower, that make intelligible our relations with each other and with the natural world: places that welcome and enclose, whose breaks and edges are never without meaning.

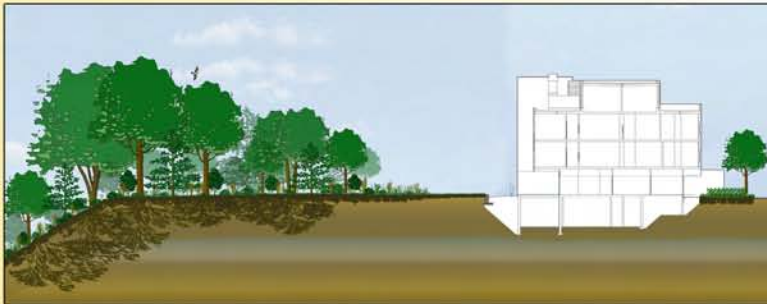
Alex Wilson, *The Culture of Nature*



Native Habitat Design

...even the garden, which expresses our most intimate relationship with nature and mirrors our attitudes towards the larger planet, can be a place that contributes towards sustaining and restoring local ecosystems.

Leslie Jones Sauer, *The Once And Future Forest*



Ravine Stewardship Plans

- Site Inventory and Analysis
- Sustainable Site Planning
- Design with Native Plants
- Ravine Stewardship Plans
- Natural Heritage Impact Studies
- Edge Management Plans

ARBORICULTURE is concerned with the assessment and care of trees, shrubs, and vines.

Where trees are ill-kept, dying, or diminishing, we often find a community that feels run down. Though trees are seldom recognised as either part of the cause or a symptom of community woes, the truth is clear -- trees symbolize permanence and stability. Where trees thrive a community feels good about itself.

R. Neil Simpson, Shading Our Cities



White Oak (*Quercus alba*)



Tree Protection

To plant a Tree is an act of faith in the earth -- an act of hope for the future -- an act of humanity towards coming generations who will enjoy its fruits after we shall be gone.

L. Merrier

Arborist Reports
Tree Inventory and Retention Plans
Risk Assessment
Planting Design
Community Tree Master Planning

URBAN DESIGN

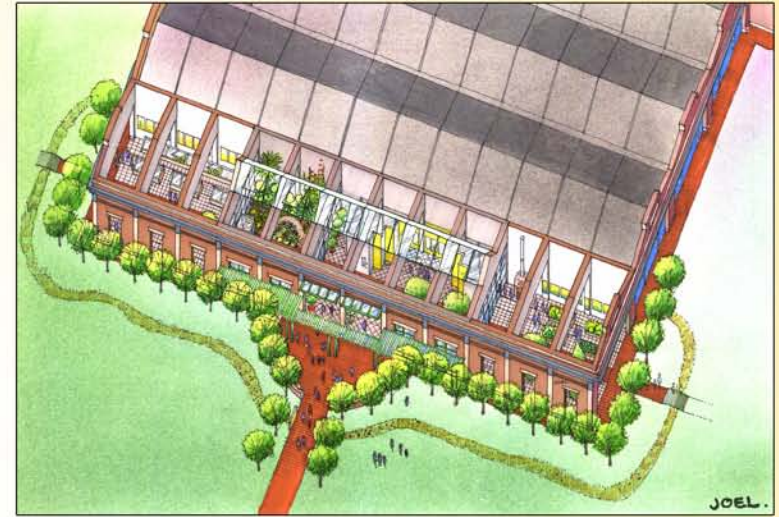
focuses on creating healthy and vibrant environments in which to live, work and play.



Flatiron Intersection



The Esplanade Promenade



In one facility, the Wychwood Community Green Barn, will combine the benefits commonly associated with a greenhouse, community garden, park, environmental education centre, community centre, farmer's market, play area, bakery, gourmet pizza place, and piazza/marketplace.

Streetscape Design
Planting Design
Circulation & Paving Design
Wayfinding/Signage Design

Recent/Current Projects

- ✧ Baby Point Residence
- ✧ Cedarvale Community School
- ✧ Hogg's Hollow Ravine Stewardship Plan
- ✧ Lake Simcoe Labyrinth
- ✧ London Islamic Centre
- ✧ Reason for Hope Garden, Ontario Science Centre
- ✧ Romero Centre Roof Garden
- ✧ Rosedale Residence
- ✧ University of Toronto Edge Management Plan
- ✧ Washburn Reservoir Landscape Plan

Sunarts Design has designed residential landscapes in the:

- ✧ Humber Valley
- ✧ Bloor West Village
- ✧ Baby Point
- ✧ High Park
- ✧ Rosedale
- ✧ Hogg's Hollow
- ✧ Forest Hill
- ✧ Leaside
- ✧ Lawrence Park
- ✧ Cabbagetown
- ✧ The Beaches
- ✧ Lorne Park

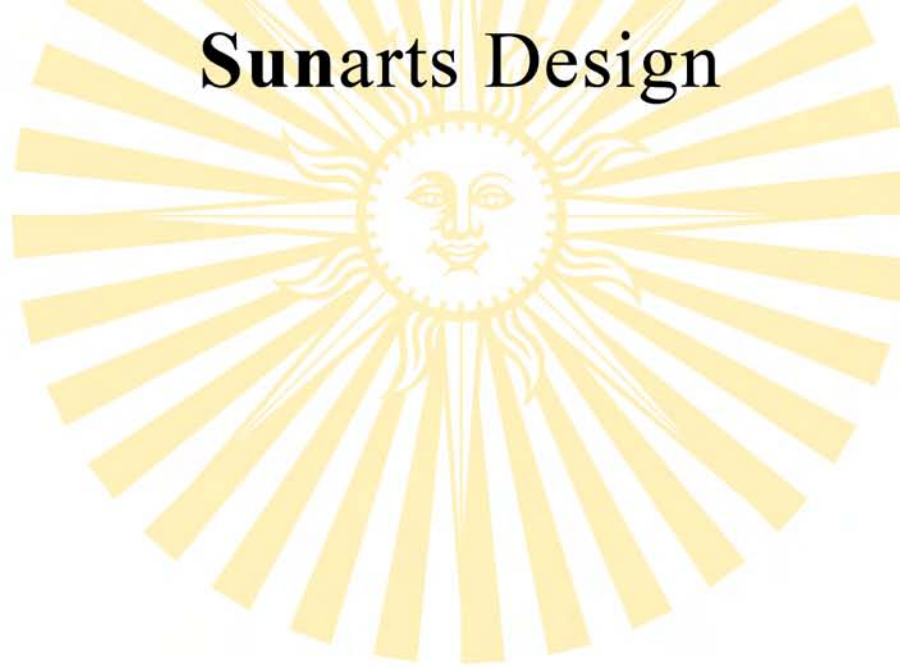
Client List

- ✧ City of Ann Arbor Parks and Recreation
- ✧ City of Toronto Parks and Recreation
- ✧ Montcrest School
- ✧ Ontario Science Centre
- ✧ Religious Society of Friends (Quakers)
- ✧ Sisters of Service
- ✧ St. Lawrence Neighbourhood Business Improvement Area
- ✧ Supportive Housing Coalition of Toronto
- ✧ The Body Shop Canada
- ✧ The Jane Goodall Institute
- ✧ The Sterling Hall School
- ✧ Toronto Region and Conservation Authority
- ✧ University of Toronto



*Jane Goodall with Josephine and David Orsini
Reason for Hope Garden, Ontario Science Centre
20 October 2001, photo by Henry Koch*

Sunarts Design



CONTACT:

David Orsini, OALA , ISA
Landscape Architect/Certified Arborist
60 Rivercrest Road, Toronto, ON M6S 4H3
T 416-604-4188 F 416-604-4465
do@sunarts.ca
www.sunarts.ca